

PART OF N.E. 1/4

14-3

SECTION 5, T.6N., R1W., S.L.B. & M

IN OGDEN CITY, NORTH OGDEN CITY, NORTH OGDEN DISTRICT & TOWN OF HARRISVILLE

PREFIX: 11-014

SCALE 1" = 100'

SEE PAGE 14-2

TAXING UNIT: 03, 07, 12, 13, 14, 10

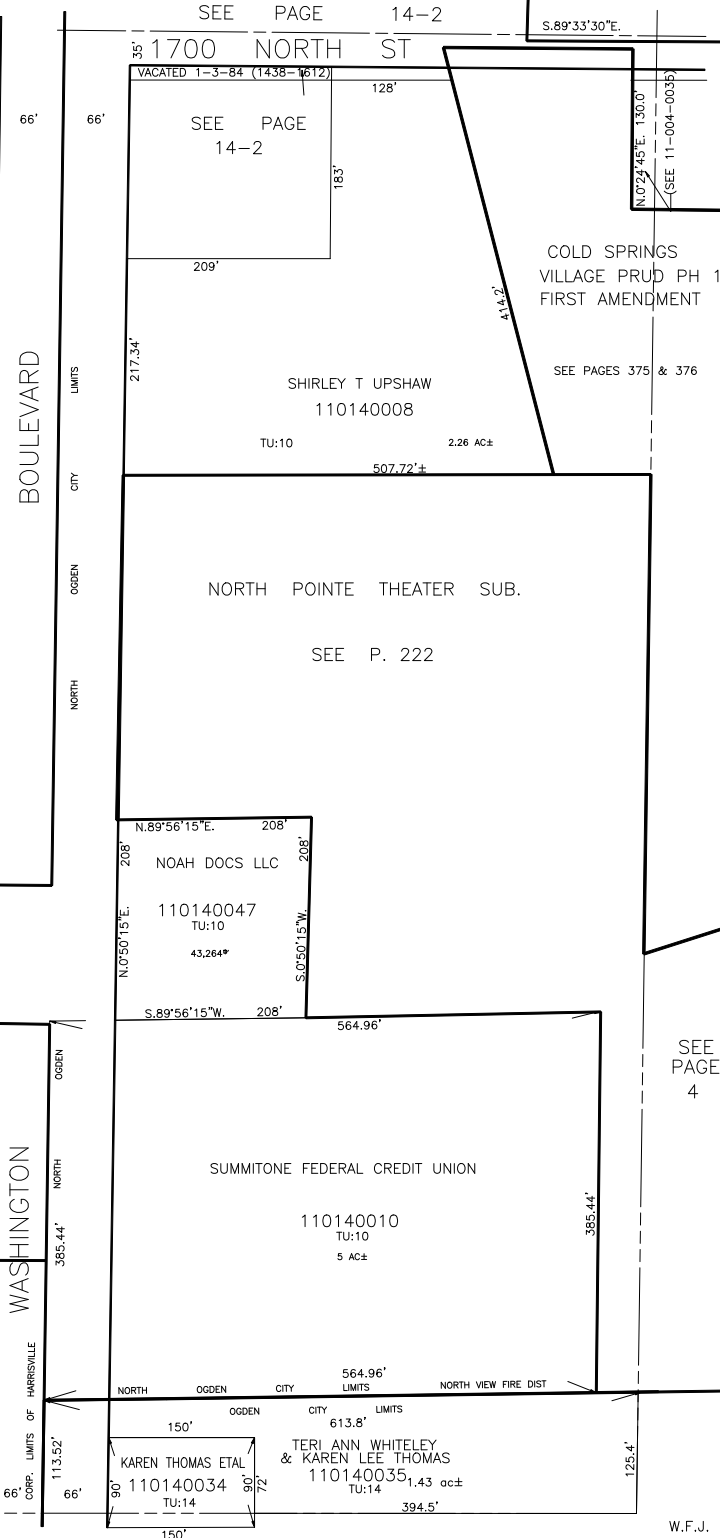
PARCEL NO.  
 110140007 TO 110140011  
 110140024 TO 110140028  
 110140034  
 110140035  
 110140047  
 110140054

200'  
 SHANNA LYN LAFLEUR  
 ETAL  
 110140024  
 TU:07  
 200'

102.30' S.89°12'E. 427.06'  
 NORMAN E LONGHURST  
 & WF DANIELE B  
 110140052  
 TU:07 1 AC±  
 102.00' N.0°48'E. 102.00'  
 N.89°12'W. 427.06'  
 NORTH OGDEN CITY LIMITS  
 ALLEN WALTON REVOCABLE TRUST AGREEMENT  
 110140025  
 TU 433 1.749 AC±  
 256.94'

17.57' 186.80' R.O.W.  
 ALEXANDER R BOULTON  
 ETAL JOINT-TRUSTEES  
 (JAMES W SHUPE ETAL CLAIMS PT)  
 110140026  
 TU:07  
 186.80'  
 FAMILY TRUST AGREEMENT  
 OF FRANCES EDITH SHAEFFER  
 22-JUNE-2014  
 110140027  
 14,227\* TU:07  
 76.16' 156.1' 116.17'  
 SEE 11-014-0030

234'  
 UTANG MANAGEMENT LLC  
 110140028  
 TU:12 19,890 SQ FT  
 15' R.O.W.



SEE PAGE 14-1

SEE PAGE 16

W.F.J. 2-73